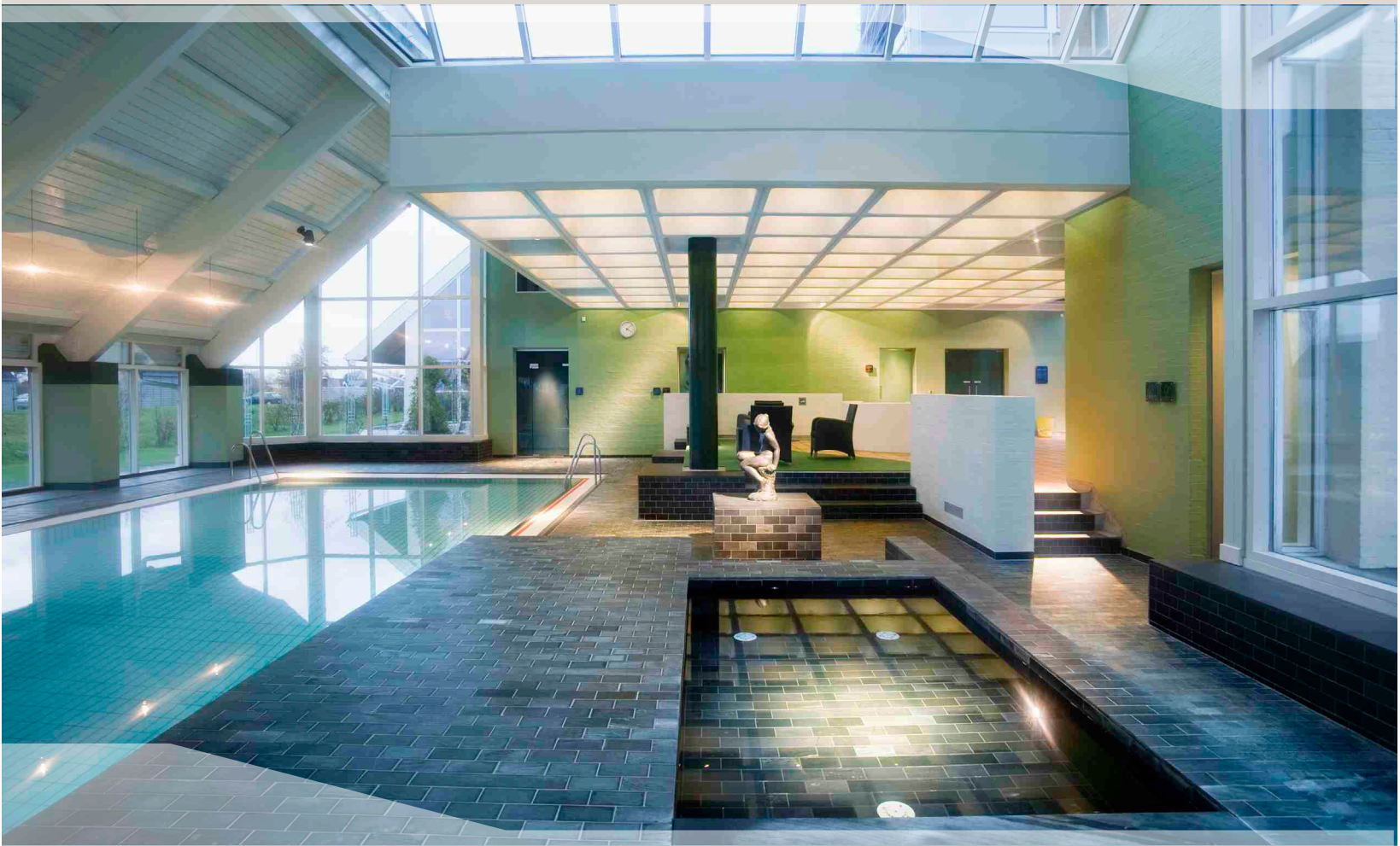


RIVERSTONE ARCHITECTURAL STONE

THE FINEST NATURAL STONE FOR FLOORING, CLADDING, STAIRS, SKIRTINGS, WORKTOPS, COPINGS, SWIMMING POOLS, SILLS AND PATIOS



UNCOVER THE SOURCE - DISCOVER NATURAL PHYLLITE

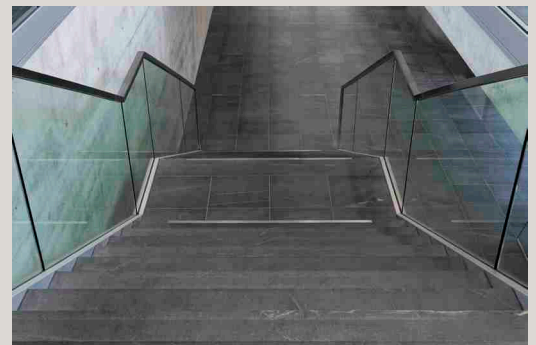
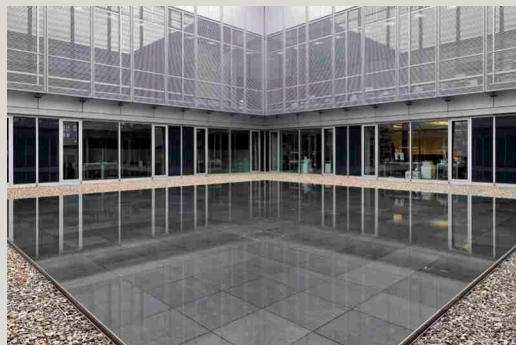
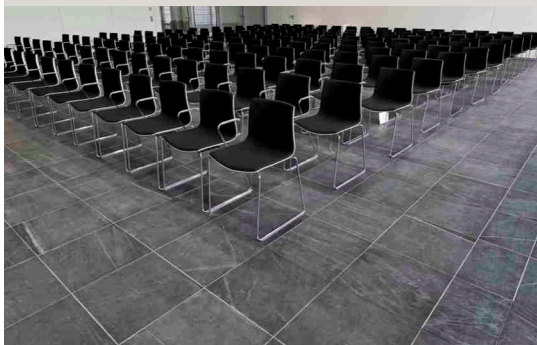


Following The Natural Tradition

Equally suited to domestic or commercial projects, Riverstone's distinctive yet subtle grey/green tones complement and enhance all environments. Being a metamorphic phyllite rock, Riverstone is similar to slate but typically with a slightly coarser crystal grain size.

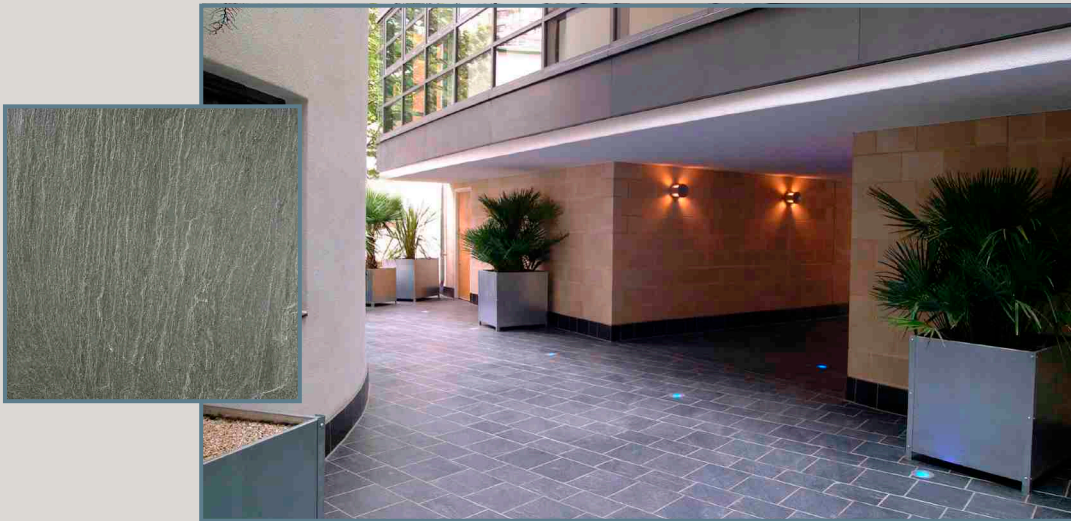
For centuries, Riverstone has been used by its quarry's neighbouring communities as a prized stone for its durability and aesthetic qualities.

Suitable for all architectural applications, especially for flooring and stair treads, Riverstone has a naturally riven surface, making it coarser and more slip resistant under wet surface conditions than regular slate - hence, satisfying one of the most important criteria for any flooring material.



Topography of Terror Museum - Berlin, Germany

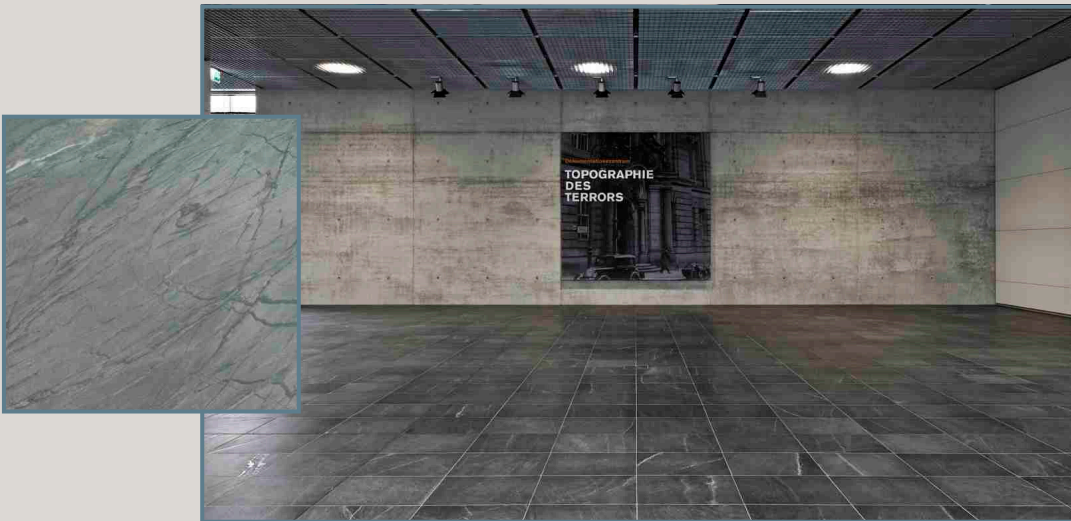
Riverstone Versatile Finishes



Natural Split

Expertly split by hand with a traditional riven surface.

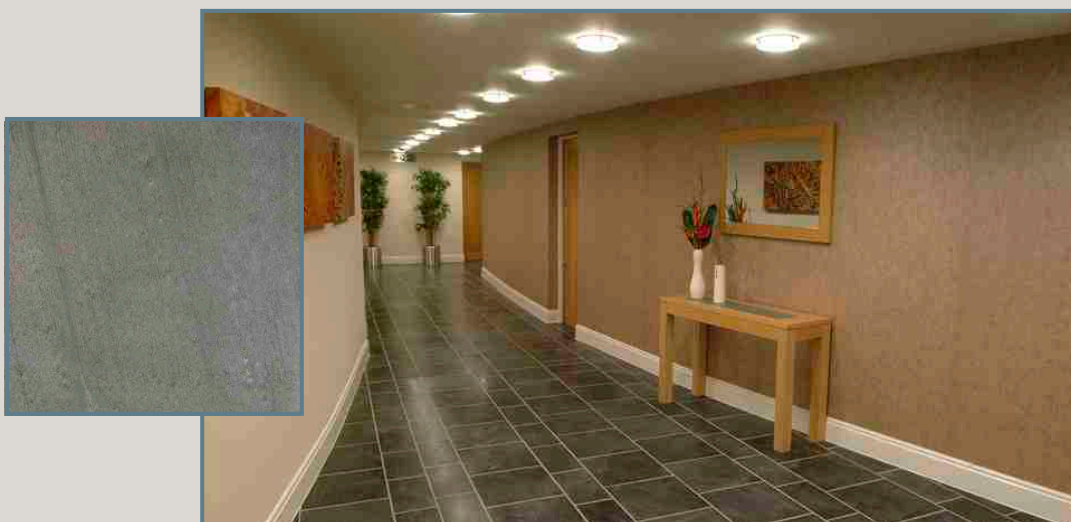
Luxury Apartments - London



Brushed Antique

A smooth matt finish retaining the intrinsic properties of the natural riven finish.

Topography of Terror Museum - Berlin, Germany

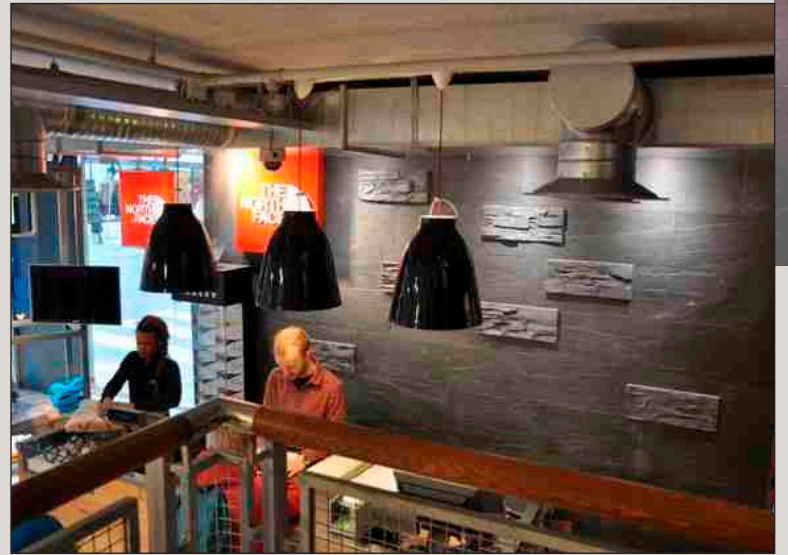
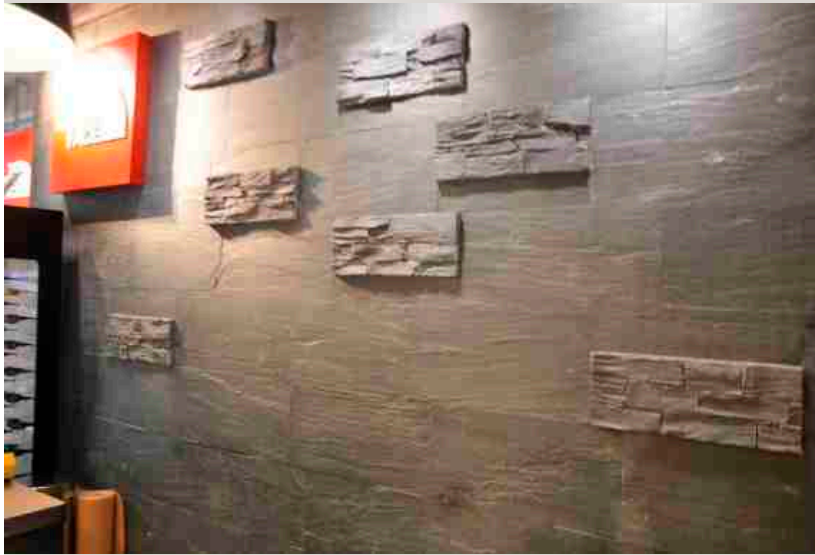


Honed

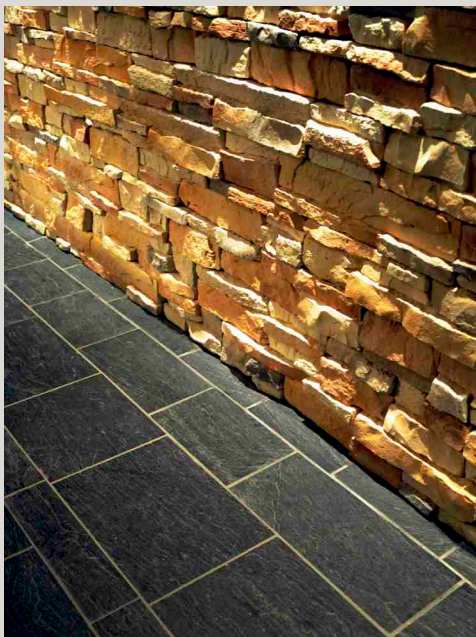
A glossy finish which enhances the veining and general appearance of the stone.

Knightbridge Apartments - London, UK

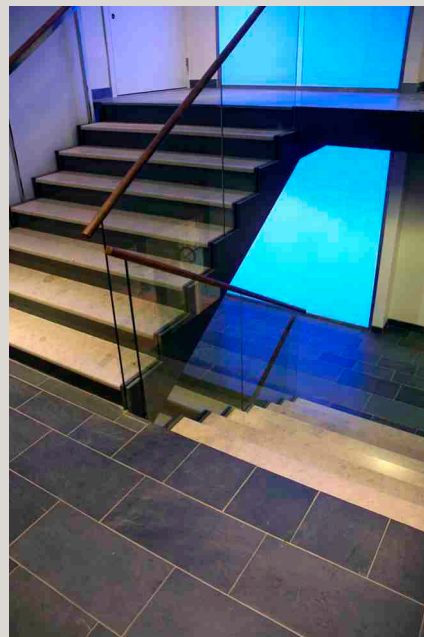
The rich colours and naturally tactile texture of Riverstone, provides a durable and long lasting finish to any building



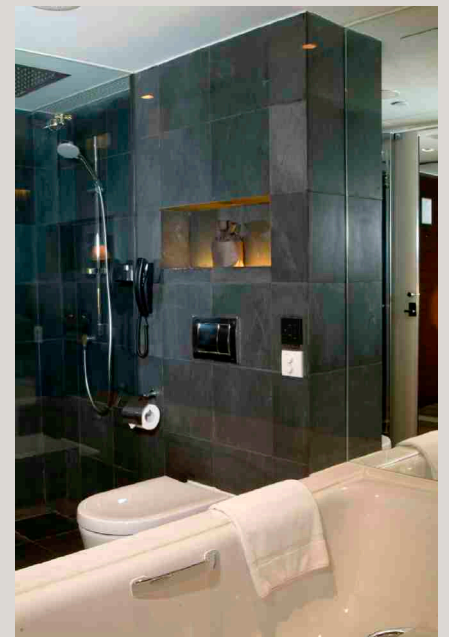
North Face - Sweden



Apartments - London, UK



Hotel - Edinburgh, UK



The Cube - Birmingham, UK

The natural riven finish of Riverstone has the advantage of making it a surface which provides excellent slip resistance



Kreissparkasse Wiedenbrück (Bank) - Germany

Riverstone Features and Benefits

The specification of Riverstone for any project offers the following unique benefits:

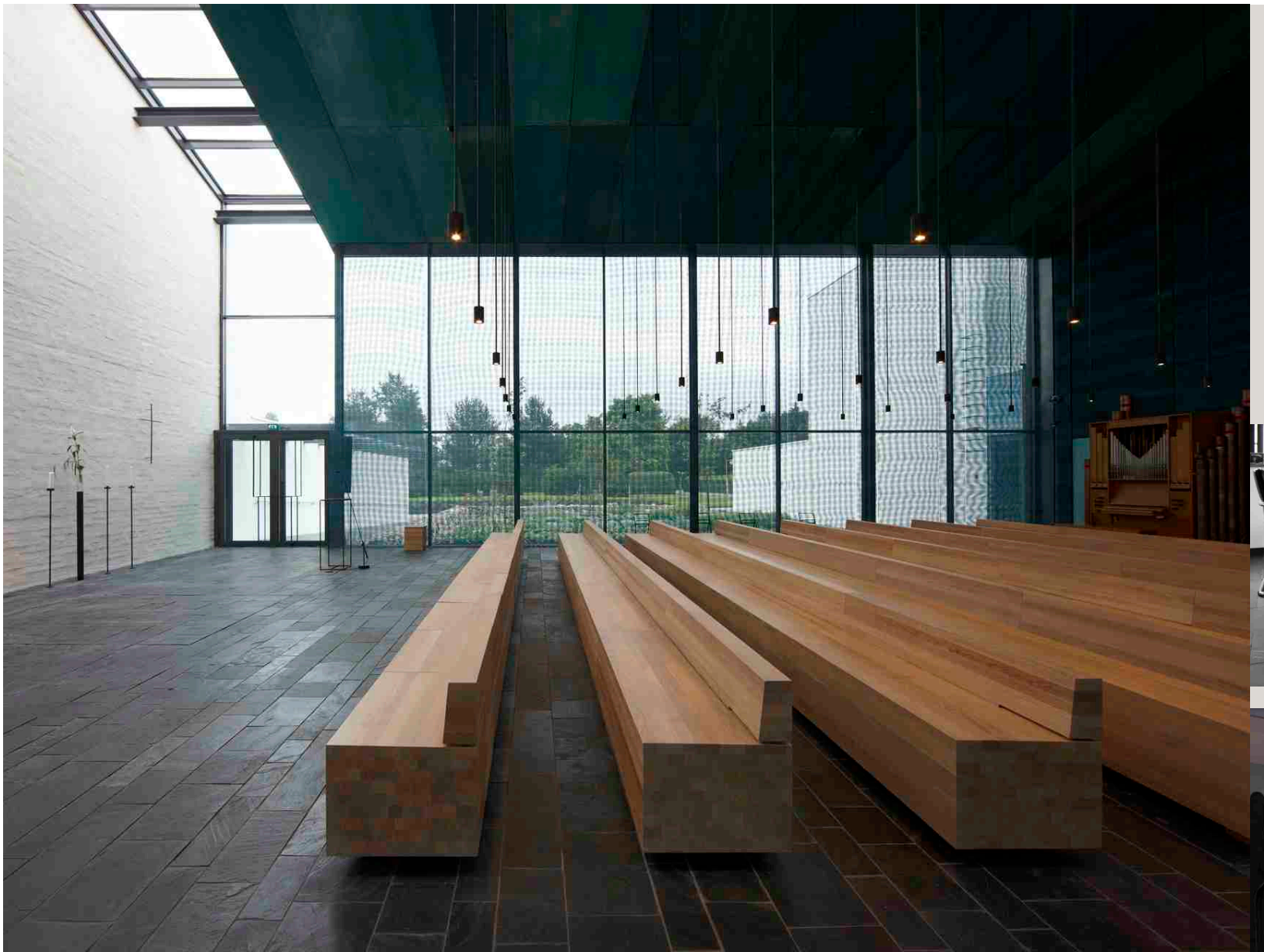
- Riverstone has a natural colour finish and is devoid of artificial pigments, so it does not fade in sunlight.
- Riverstone is non-porous - so is resistant to frost, as well as to wet and dry cycles. The very low coefficient of expansion means that it is unaffected by changes in temperature.
- Riverstone is stable with no adverse reaction in polluted environments (e.g. Acid rain and salt).
- Riverstone is non-combustible.
- Riverstone has a very high flexural strength, which helps it in meeting varied demands when used as a flooring covering as it can be produced in thinner sizes, but still resistant to weathering forces.
- Riverstone has a very high density and low porosity which represents a good wearing surface and resists infiltration by general dirt, making the stone relatively easy to clean and maintain.

A full geological testing report is available, please contact us on +44 (0) 20 89617725 or www.ssgroup.com to request a copy.

Appearance

Riverstone has a natural grey/green colour, but the different surface treatments available mean that its appearance can be altered dependant on the chosen finish and ambient lighting.





Church - Finland

Formats

Riverstone is available in a wide range for:

- Flooring tiles and slabs (scants)
- Cladding
- Sills, treads and risers
- Copings
- Skirtings
- Worktops
- Exterior patio/paving
- Swimming pools

Most of these products are available to order on a bespoke basis, but some products are available from stock, please contact us for further details.

Standard Sizes

Flooring Tiles and Slabs:

- 300 x 300 x 10 mm - all finishes
- 400 x 400 x 10 mm - all finishes
- 600 x 300 x 10 mm - honed and brushed antique
- 600 x 400 x 10 mm - honed and brushed antique
- 300 mm x random length- honed and brushed antique
- 400 mm x random length - honed and brushed antique

Slabs (Scants):

Frame sawn slab with manufactured finish to 600 mm x 2000 mm

Sills, Treads and Risers:

Sawn strip with manufactured finish to 600 mm width and 2000 mm length

Paving and Miscellaneous:

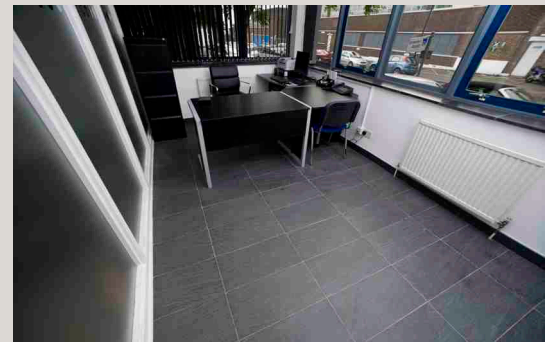
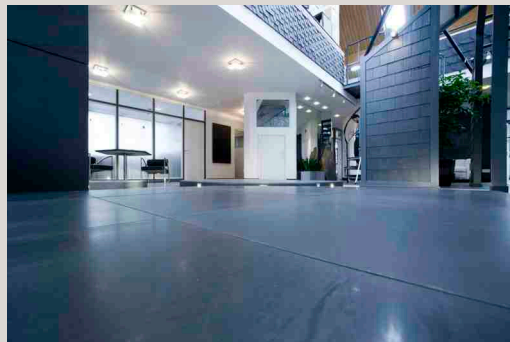
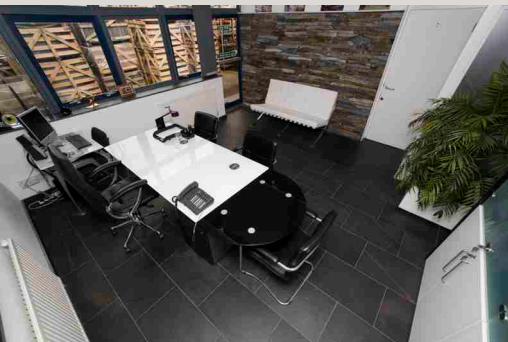
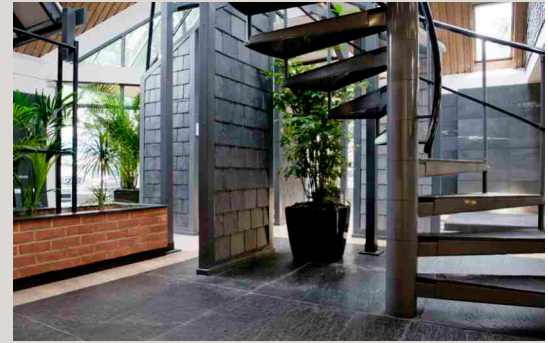
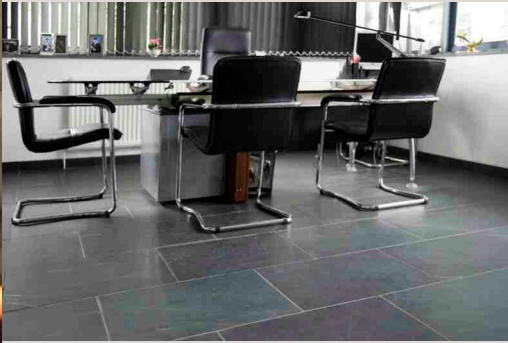
Paddlestones (tumbled finish) 200 mm x 200 mm thickness to 50 mm Crazy paving (various thicknesses)

Note: Flooring fixing details are available as a separate data sheet. Copy available on request.

Standards and Testing

Riverstone has been subjected to a wide variety of individual testing procedures and it complies with the British Standard. Being the official English language version of EN 12057: 2004 and EN 12058: 2004 BS covers Internal and External Flooring, Internal and External Wall and Ceiling finishes, and Slabs for Internal and External use.

For further information on British Standard guidelines on the use of the stone, please contact us.



SSQ Showroom - London



Calrion Post Hotel - Sweden

i Contact Info

SSQ Natural Slate
301 Elveden Road
Park Royal
London NW10 7SS
United Kingdom

T. +44 (0) 20 8961 7725
F. +44 (0) 20 8965 7013
E. info@ssq.co.uk

Design and Technical Services

No two projects are the same; we can provide products to your bespoke specification or recommend suitable alternatives to achieve the same visual design effect. Our design and technical team would be pleased to advise you on any aspect of your project. For more information please contact us on +44 (0) 20 8961 7725 or www.ssqgroup.com

To find out more about Riverstone Architectural Stone & other SSQ natural slates please visit
www.ssqgroup.com

Due to the variations in lighting and weather, the photographs shown in this brochure do not always highlight the unique grey/green colour of Riverstone.



EXCLUSIVELY **NATURAL SLATE**